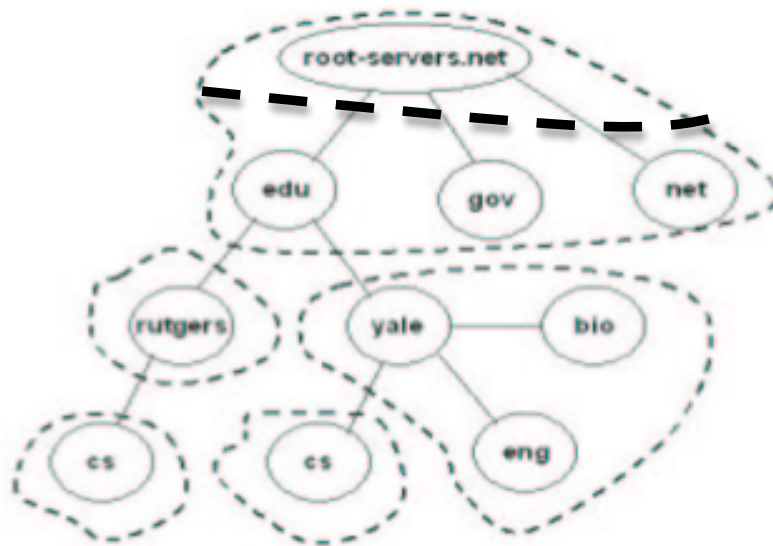


Question 6: Write a step by step solution to the following problem.

Consider the Internet in the picture below, in which zones are indicated with a dashed line. There is only one DNS server per zone and it happens to have the same name as the highest node in each zone: yale.edu, cs.yale.edu, rutgers.edu, cs.rutgers.edu, rdl.edu, tdl.gov, tld.net and root-servers.net. The only servers supporting recursive querying are cs.yale.edu and cs.rutgers.edu.

For each of the queries below, list in order all the DNS servers contacted by the resolver. Assume there is no caching performed at any level of the hierarchy.



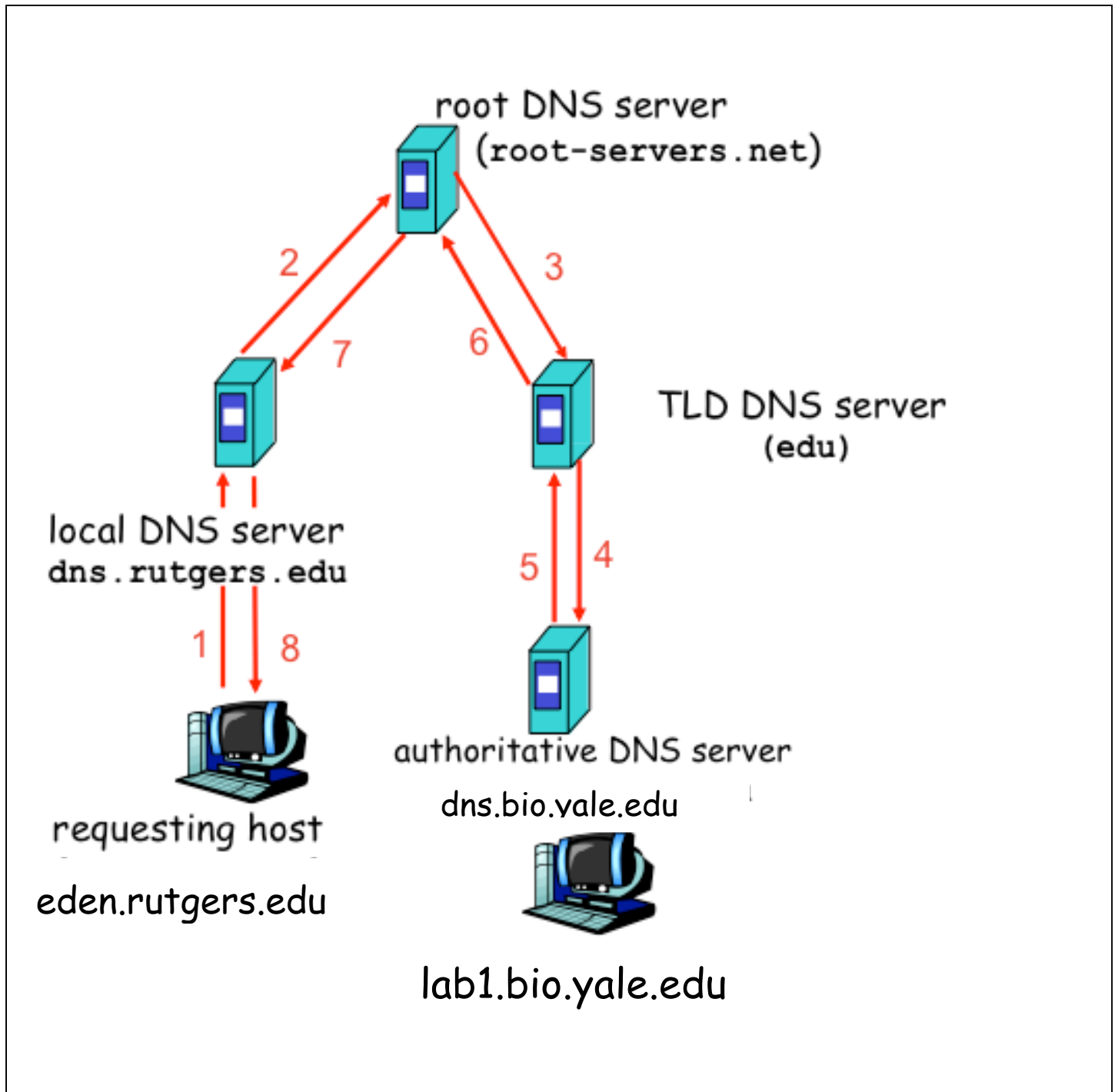
- a) A machine called lab1.bio.yale.edu exists in the biology (bio) department at Yale, and a user on eden.rutgers.edu (rutgers) launches a query to resolve the name lab1.bio.yale.edu. List the steps and the names of the servers that will be contacted by DNS.

**We assume that none of the servers have the resolution of the name cached, thus all queries must be resolved and the final IP address must be obtained from the authoritative server in Yale**

1. The requesting user on machine *eden.rutgers.edu* at rutgers queries for the resolution of the name *lab1.bio.yale.edu*
2. The local DNS server (*dns.rutgers.edu*) processes they query from *eden.rutgers.edu* by issuing a query to the root DNS server (*root-servers.net*) on behave of *eden.rutgers.edu*
3. The *root-servers.net* server processes they query from *dns.rutgers.edu* by issuing a query to the Top Level Domain (TDL) server (*edu*) on behave of *root-servers.net*
4. The *edu* server processes they query from *root-servers.net* by issuing a query to the Authoritative DNS server (*dns.bio.yale.edu*) on behave of *edu*
5. *dns.bio.yale.edu* resolves the query and answers back to *edu*
6. *edu* obtains the resolve query and forwards it to *root-servers.net*
7. *root-servers.net* obtains the resolve query and forwards it to *dns.rutgers.edu*
8. *dns.rutgers.edu* obtains the resolve query and forwards it to *eden.rutgers.edu*

(5 points)

- b) Draw a picture that illustrates the query resolution process you explained in the previous question. Make sure you label correctly so it is clear which step above correspond to the messages in the picture.



(10 points)