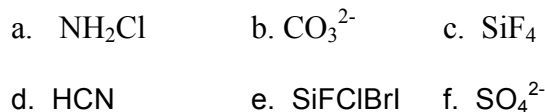


## Point Group Practice

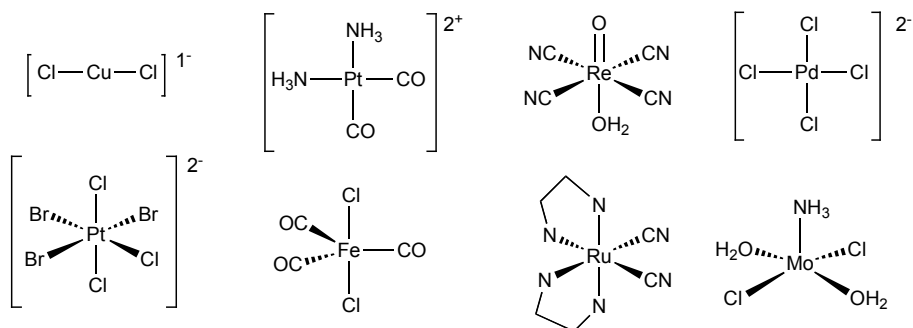
## Class Activity

Directions: Assign point groups for all molecules. You will be picked to assign a point group to a molecule below. You will be allowed to use a model kit, the board, and/or document camera in order to explain how you determined the point group.

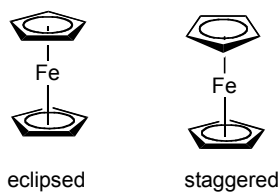
- For the following compounds: draw the correct Lewis structure, predict the geometry and identify the point group.



- Identify the point group of the following coordination compounds:



- Identify the point group for the two conformation of ferrocene:



- Identify the point group for the following compounds you will prepare in lab (Me groups are used in place of the actual  $^n\text{Bu}$  groups on the Rh compound):

