

# RATIONAL AGENTS

Fabrizio Santini | COMP 131

VERSION 1.1

## TODAY ON AI

- Do you like PEAS?
- Rational agents
- Questions?



**Do you like PEAS?**

**SECTION 01**

The difference between a taxi driver and a crossword puzzle solver is all about PEAS:

- **Performance measure**
- **Environment**
- **Actuators**
- **Sensors**



	PERFORMANCE	ENVIRONMENT	ACTUATORS	SENSORS
<b>Taxi driver</b>	Safe, fast, legal, comfortable trip, maximize profit	Roads, other cars, pedestrians, customers	Steering, accelerator, brake, signal, horn, display	Cameras, sonar, speedometer, GPS, accelerometer
<b>Crossword puzzle solver</b>	?	?	?	?

Performance  
Complete the puzzle

Environment  
The puzzle grid

Actuators  
Pencil (?)

Sensors  
Camera (?)

	CROSSWORD SOLVER	TAXI DRIVER	POKER	MEDICAL DIAGNOSIS	TEACHING AI TO THIS CLASS
<b>Fully Partially Observable</b>	Fully observable	Partially observable	?	?	?
<b>Deterministic Stochastic</b>	Deterministic	Stochastic	?	?	?
<b>Static Dynamic</b>	Static	Dynamic	?	?	?
<b>Discrete Continuous</b>	Discrete	Continuous	?	?	?
<b>Episodic Sequential</b>	Sequential	Sequential	?	?	?
<b>Single Multi Agent</b>	Single	Multi	?	?	?
<b>Known Unknown</b>	Known	Known	?	?	?

**POKER**

Partially observable, Stochastic, Static, Discrete, Sequential, Multi agent, Known

**MEDICAL DIAGNOSIS**

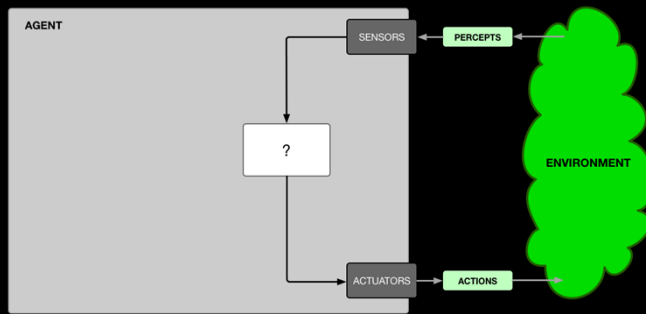
Partially observable, Stochastic, Dynamic, Continuous, Sequential, Single agent, Known

**TEACHING AI**

Partially observable, Stochastic, Dynamic, Discrete, Sequential, Multi agent, Known

**Rational agents**

**SECTION 02**



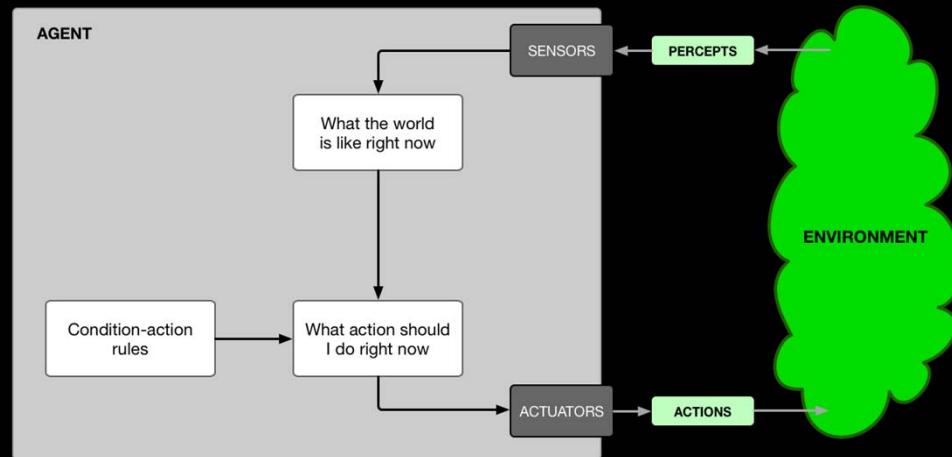
An **agent** is an entity that perceives and acts.

More formally, an agent is a **function** from percept histories to actions:

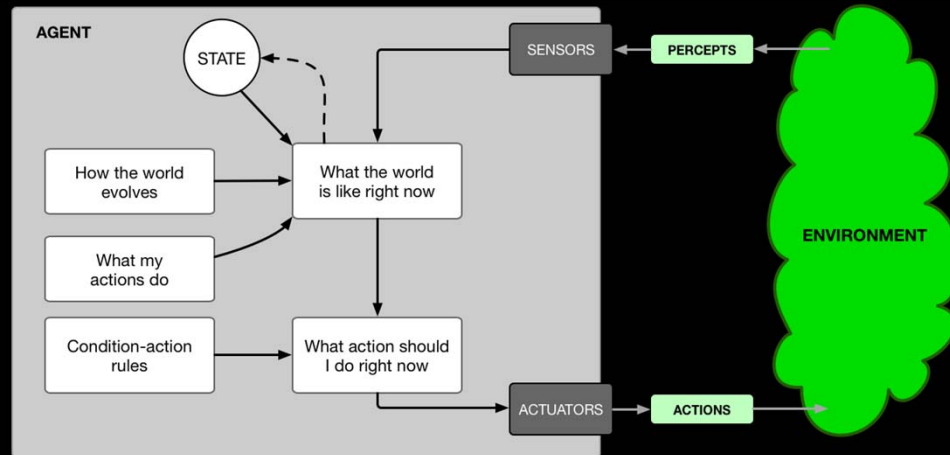
$$f: P^* \rightarrow A$$

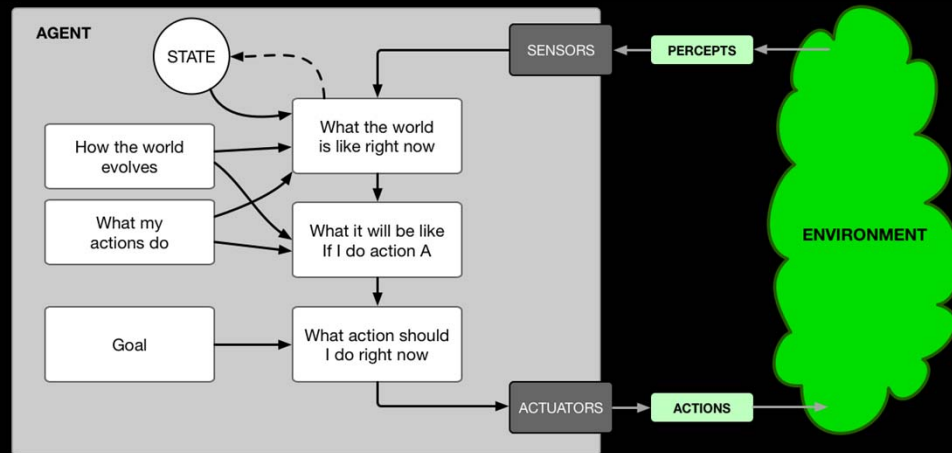
For any given class of environments and tasks, we seek the agent with the **best performance**.

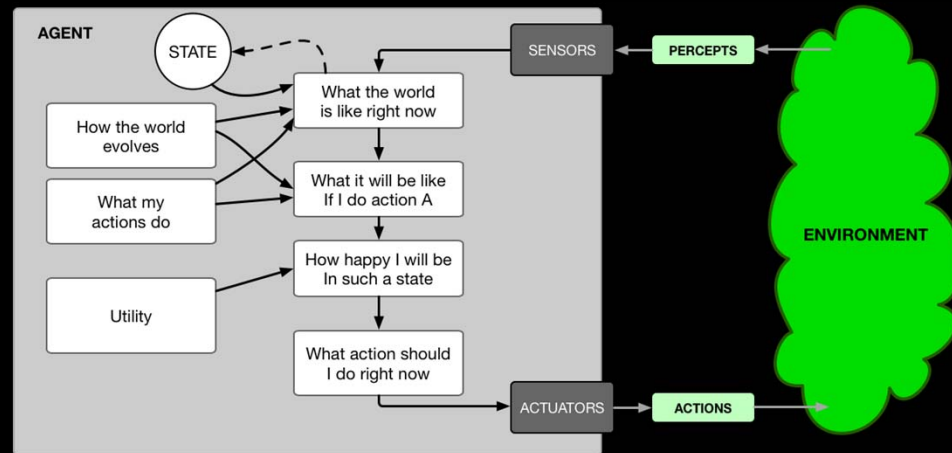
Computational limitations make perfect rationality unachievable. Therefore AI is about design the best program for given machine resources. Beware of omniscience.

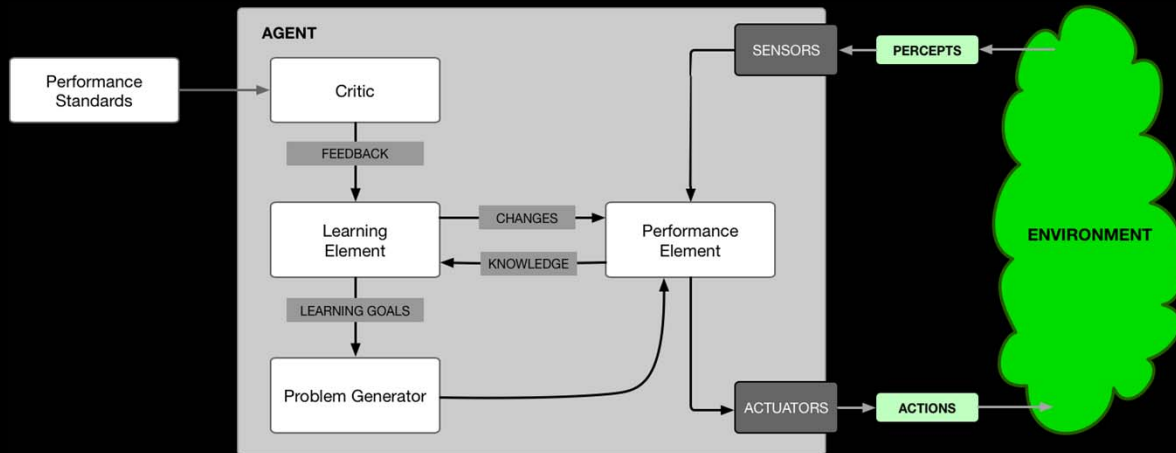


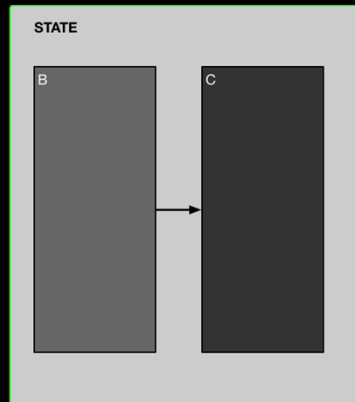




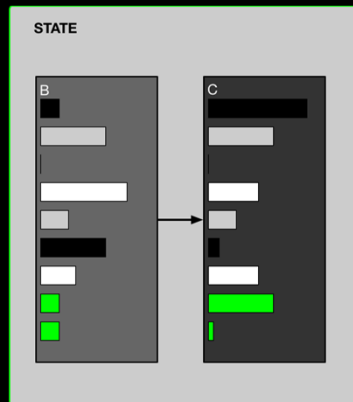




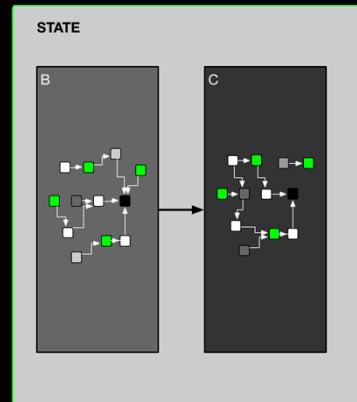




ATOMIC



FACTORED



STRUCTURED

**QUESTIONS ?**